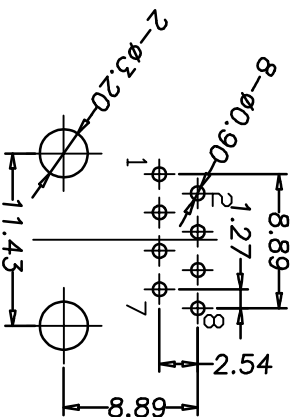
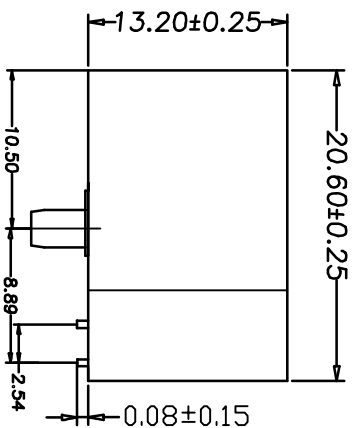
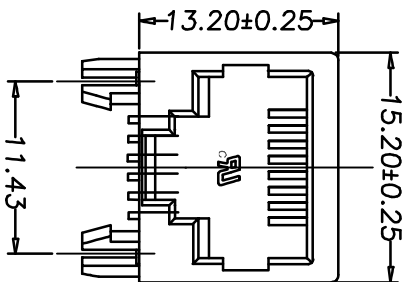


| REV | MODIFICATION | DATE | DRAW | APPROVE |
|-----|--------------|------------|------|---------|
| A | | 2012/10/29 | JDL | Oscar |
| | | | | |
| | | | | |



PC Board Layout

NOTES:-

ELECTRICAL:

- VOLTAGE RATING : 125 VAC RMS.
- CURRENT RATING : 1.5 AMP.
- CONTACT RESISTANCE : 50 MILLIOHMS MAX.
- INSULATION RESISTANCE: 500 MEGOHMS MIN @ 500 VDC.
- DIELECTRIC STRENGTH : 1000 VAC RMS 50HZ, 1MIN.

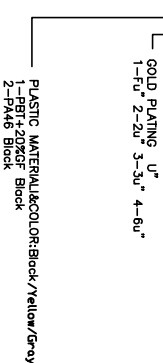
MECHANICAL:

- HOUSING MATERIAL : NYLON+30% G.F UL94V-0.
- CONTACT MATERIAL : PHOSPHOR BRONZE ø0.46mm.
- PLATING : GOLD PLATING OVER NICKEL.
- SHIELD COPPER ALLOY(OR STEEL ALLOY) 0.20mm THICKNESS PLATING NI.
- LED OPTION
- OPERATING LIFE : 750 CYCLES MIN.
- PCB RETENTION PRE-SOLDER : 1 LB MIN.
- PCB RETENTION POST-SOLDER: 10 LBS MIN.

ENVIRONMENTAL:

- STORAGE : -40°C TO +85°C.
 - OPERATION: 0°C TO +70°C.
 - WAVE SOLDERING TEMPERATURE: 255~265° (5~10SECONDS).
 - ROHS COMPLIANT
- MATES WITH MODULAR PLUG CONFORMING TO FCC PART 68, SUBPART F.

PART NUMBER: 59A-N1108S-XX



| | | | | | |
|--------------------------------------|----------|-----------------------|---|-------|-------|
| DIMENSION IN mm [Inch] | | Shinhwa Tech Co., LTD | | | |
| TOLERANCE UNLESS OTHERWISE SPECIFIED | | | | | |
| .X±0.20 | X.±1° | FILE NO. | DWG NO. YL59A-N1108S | | |
| .XX±0.15 | .X°±0.5° | TITLE | 59A 1X1 8P8C WIRE SOLDER JACK W/D SHIELD SIDE ENTRY,ROUND PIN | | |
| .XXX±0.075 | | APPROVE | CHECK | DRW | Oscar |
| | | | | PROJ. | SOLE |
| | | | | SIZE | 1:1 |
| | | | | SHEET | A3 |
| | | | | REV | 1 |
| | | | | | A |